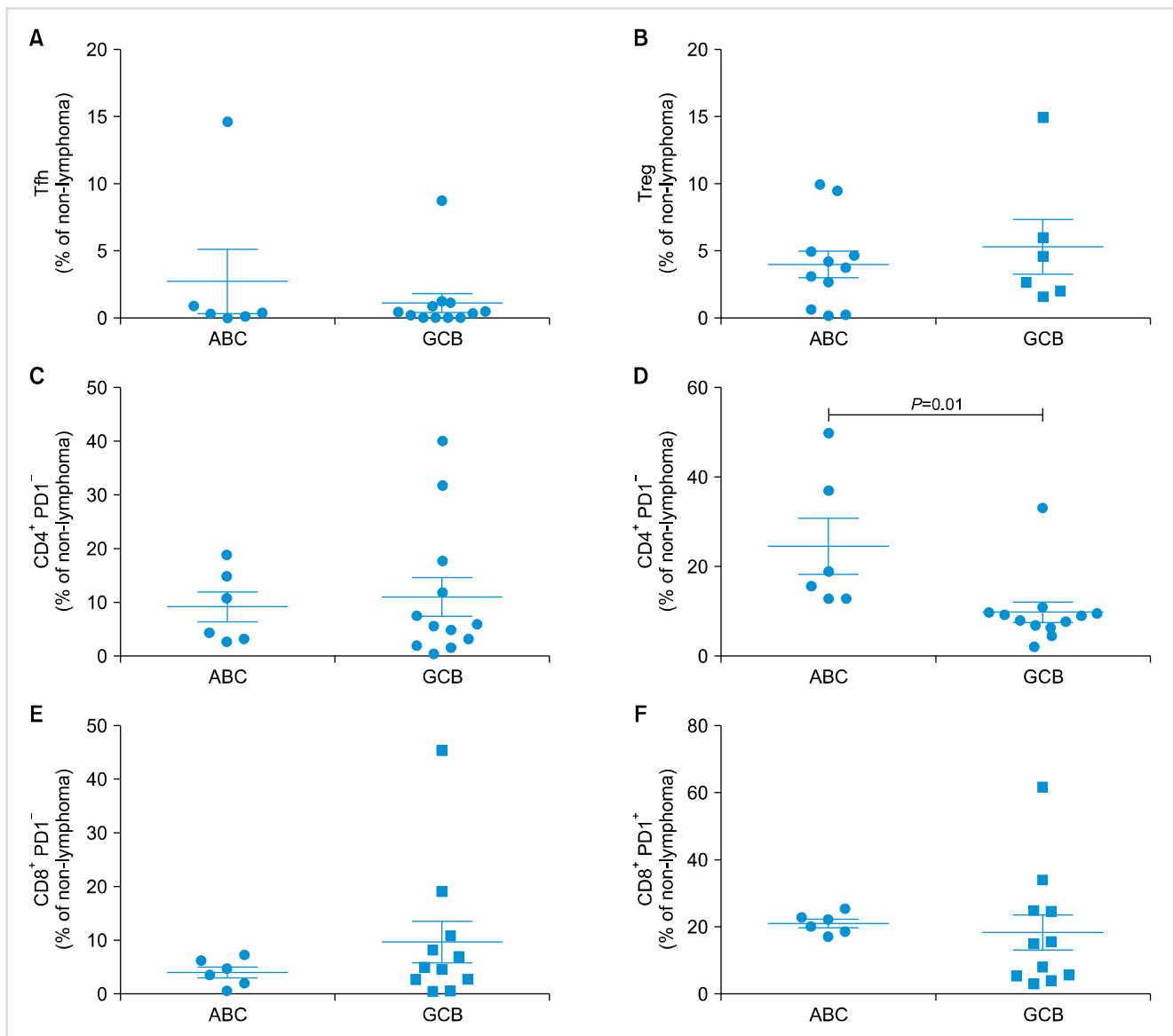


**Supplementary Table 1.** Flow cytometry panels utilized in this study.

Panel 1	Panel 2	Panel 3
CD3	CD3	CD3
CD4	CD4	CD4
CD8	CD8	CD8
CD127	FoxP3	GzmB
CD25	GARP	Perforin
CCR6	CD45RA	cPARP
CXCR3	CCR7	-
CXCR5	CXCR5	CXCR5
PD1	PD1	PD1
HLA-DR	TIM3	TIM3
CD38	CTLA4	CTLA4
CD56	LAG3	TIGIT
CD14	CD14	-
CD33	CD33	-
CD20	CD20	CD20
CD19	PD-L1	PD-L1
Ig	Ig	-
Ig	Ig	-
CD24	PD-L2	-
CD10	IL-2	-
CD5	IFN	-
Live/dead	Live/dead	Live/dead



**Supplementary Fig 1.** Cell frequencies in DLBCL, broken down by activated B-cell (ABC) and germinal center B-cells (GCB) cell of origin. (A) Tfh, (B) Treg, (C) CD4<sup>+</sup> PD1<sup>-</sup>, (D) CD4<sup>+</sup> PD1<sup>-int</sup>, (E) CD8<sup>+</sup> PD1<sup>-</sup>, (F) CD8<sup>+</sup> PD1<sup>+</sup>. Frequencies represent the proportion of cells after lymphoma cells were excluded from the analysis. GARP<sup>+</sup> Tregs, CD4<sup>+</sup> TIM3<sup>+</sup> PD1<sup>int</sup> cells, and CD8<sup>+</sup> PD1<sup>+</sup> TIM3<sup>+</sup> cells are not shown because only one ABC subtype sample was present in that cohort. ABC (N=6), GCB (N=11). *P*-values as indicated.