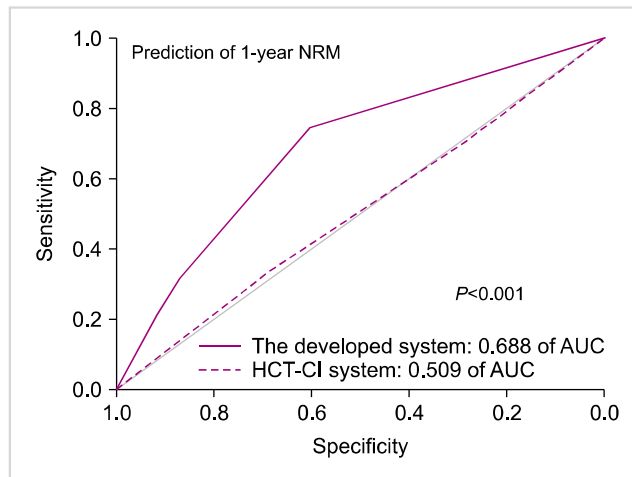
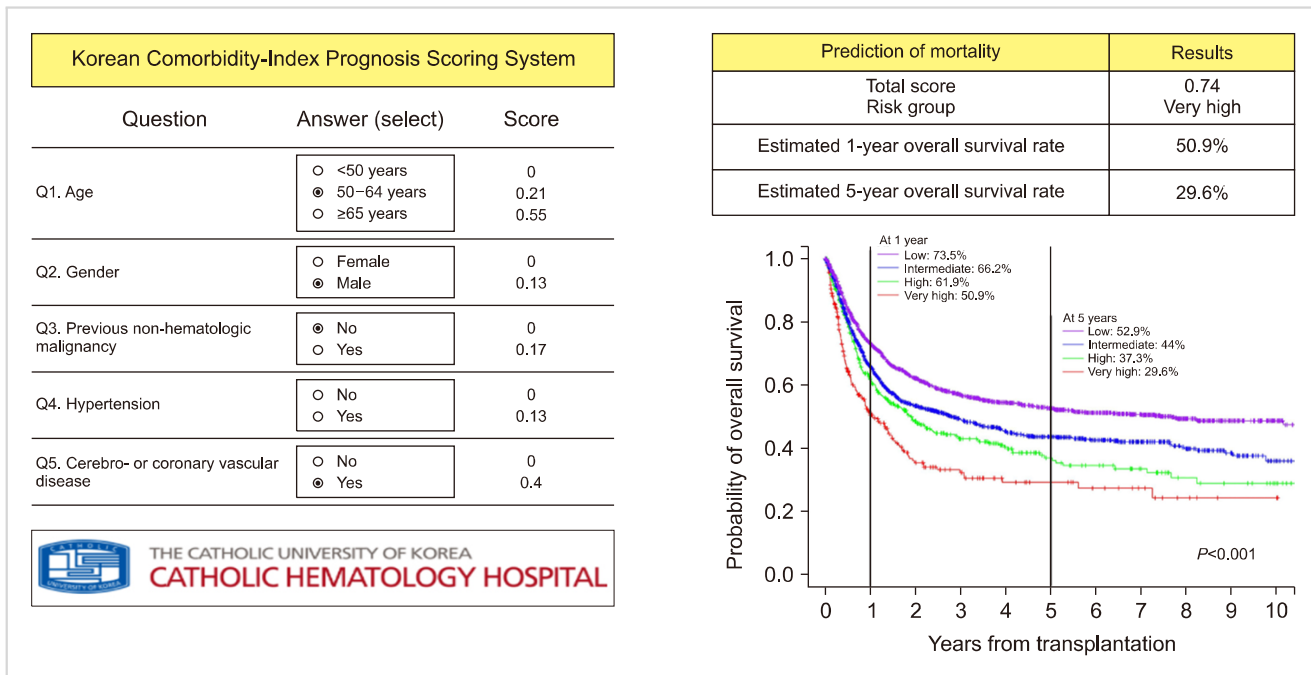


Supplementary Fig. 2. Comparisons of proportions of patients harboring comorbidities at between diagnosis and pre-transplantation. There were statistical significances in increasing hypertension [12.5% (N=39) vs. 24.4% (N=73), $P<0.001$], diabetes [6.3% (N=20) vs. 14.2% (N=44), $P=0.002$], dyslipidemia [3.6% (N=11) vs. 14.2% (N=44), $P<0.001$], Cerebro- or cardiovascular disease [0.3% (N=1) vs. 8.3% (N=26), $P<0.001$], and anxiety disorder and/or depression [3.3% (N=10) vs. 17.2% (N=54), $P<0.001$] whereas there were no significant differences of proportions of patients who presented a previous non-hematologic malignancy and chronic obstructive pulmonary disease. Each P -value was computed by chi-square test.



Supplementary Fig. 3. Comparison of area under the curve (AUC) of receiver operating characteristics to predict 1-year non-relapse mortality between the developed system and the prior HCT-CI system. Abbreviation: HCT-CI, hematopoietic cell transplantation-comorbidity index.



Supplementary calculator. We can provide the supplementary calculator based on Excel sheet as follows (an example).